

# Minitimer MT-1

Zeitschalter

Time switch

Minuterie

Tijdschakelaar



Art.-Nr. 21-01-075

Art.-Nr. 22-01-075

Anleitung

Manual

Mode d'emploi

Handleiding





## Table of contents

How to use this manual	19
Intended use	19
Safety instructions	19
EMC declaration	21
Operation overview	22
Technical specifications	22
Checking the package contents	23
Required tools and consumables	23
Safe and correct soldering	23
Assembling the kit	25
Performing a visual check	27
Performing a functional test	28
Connecting the mini-timer	29
FAQ	30
Manufacturer's note	30
Certification	30
Conditional warranty	30
Parts list	I
Printed Circuit Board (PCB) layout (Fig. 1)	I
Connections (Fig. 2)	II
Circuit Diagram (Fig. 3)	III

(Pages I to III in the centre of this handbook are removeable.)

## How to use this manual

If you have no specialist technical training, this manual gives step-by-step instructions for safe and correct assembly of the kit and fitting of the ready-built module, and operation. Before you start, we advise you to read the whole manual, particularly the chapter on safety instructions and the FAQ chapter. You will then know where to take care and how to prevent mistakes which take a lot of effort to correct.

Keep this manual safely so that you can solve problems in the future. If you pass the kit or the ready-built module on to another person, please pass on the manual with it.

## Intended use

The kit or the ready-built module can be assembled and operated in model railways using this manual. It is designed for switching connected loads for a preset time.

The kit and the ready-built module should not be assembled or fitted by children under the age of 14.

Reading, understanding and following the instructions in this manual are mandatory for the user.

Any other use is inappropriate and invalidates any guarantees.

## Safety instructions

### Mechanical hazards

Cut wires can have sharp ends and can cause serious injuries. Watch out for sharp edges when you pick up the PCB.

Visibly damaged parts can cause unpredictable danger. Do not use damaged parts: recycle and replace them with new ones.

## Electrical hazards

- Touching powered, live components,
- touching conducting components which are live due to malfunction,
- short circuits,
- connecting the circuit to another voltage than specified,
- impermissibly high humidity,
- condensation build up

can cause serious injury due to electrical shock. Take the following precautions to prevent this danger:

- Never perform wiring on a powered module.
- Assembling and mounting the kit should only be done in closed, clean, dry rooms. Beware of humidity.
- Only use low power for this module as described in this manual and only use certified transformers.
- Connect transformers and soldering irons only in approved mains sockets installed by an authorised electrician.
- Observe cable diameter requirements.
- After condensation build up, allow a minimum of 2 hours for dispersion.
- Use only original spare parts if you have to repair the kit or the ready-built module.

## Fire risk

Touching flammable material with a hot soldering iron can cause fire, which can result in injury or death through burns or suffocation. Connect your soldering iron or soldering station only when actually needed. Always keep the soldering iron away from inflammable materials. Use a suitable soldering iron stand. Never leave a hot soldering iron or station unattended.

## Thermal danger

A hot soldering iron or liquid solder accidentally touching your skin can cause skin burns. As a precaution:

- use a heat-resistant mat during soldering,
- always put the hot soldering iron in the soldering iron stand,
- point the soldering iron tip carefully when soldering, and
- remove liquid solder with a thick wet rag or wet sponge from the soldering tip.

## Dangerous environments

A working area that is too small or cramped is unsuitable and can cause accidents, fires and injury. Prevent this by working in a clean, dry room with enough freedom of movement.

## Other dangers

Children can cause any of the accidents mentioned above because they are inattentive and not responsible enough. Children under the age of 14 should not be allowed to work with this kit or the ready-built module.

Little children can swallow small components with sharp edges, with fatal results! Do not allow components to reach small children.

In schools, training centres, clubs and workshops, assembly must be supervised by qualified personnel. In industrial institutions, health and safety regulations applying to electronic work must be adhered to.

## EMC declaration

This product is developed in accordance with the European standards EN 55014 and EN 50082-1, tested corresponding to the EC - directive 89/336/EWG (EMVG of 09/11/1992, electromagnetic tolerance) and meets legal requirements.

To guarantee the electromagnetic tolerance you must take the following precautions:

- Connect the transformer only to an approved mains socket installed by an authorised electrician.

- Make no changes to the original parts and accurately follow the instructions, circuit diagram and PCB layout included with this manual.
- Use only original spare parts if you have to repair the kit or the ready-built module.

## Operation overview

The module is designed for controlling operations in model railways which are supposed to last for a certain time. A desired switching time between of 1 - 100 seconds is set via a trimming potentiometer. The maximum switching time can be altered by replacing the capacitor C3.

The circuit is triggered by a positive switching pulse, e.g. via a switch or a reed contact. The module then switches a positive connected load.

It is possible to switch on connected loads via the mini-timer MT-1 for the preset time. Via a relay connected to the mini-timer it is also possible to switch over between two loads or to switch off a load for the preset time.

## Technical specifications

Supply voltage	12-18 Volt a.c. or d.c. voltage
Current consumption (without connected loads)	ca. 5 mA
Max. current	100 mA
Max. switching time	100 seconds ( $\pm 20\%$ )
Protected to	IP 00
Ambient temperature in use	0 - + 60 °C
Ambient temperature in storage	-10 - + 80 °C
Comparative humidity allowed	max. 85 %
Dimensions	approx. 48 x 52 mm
Weight	approx. 17 g

## Checking the package contents

Check the contents of the package for completeness immediately after unpacking:

- one kit, containing the components listed in the parts list (see page I) and one PCB or
- one ready-built module,
- one manual.

## Required tools and consumables

Make sure you have the following tools, equipment and materials ready for use:

- an electronic soldering iron (max. 30 Watt) with a fine tip,
- a soldering iron stand,
- a tip-cleaning sponge,
- a heat-resistant mat,
- a small side cutter and wire stripper,
- a pair of tweezers and long nose pliers (not necessary for the ready-built module),
- tin solder (0,5 mm. diameter),
- wire (diameter:  $\geq 0,10 \text{ mm}^2$  for all connections),
- a lamp for testing the module.

## Safe and correct soldering



### Caution:

Incorrect soldering can cause dangers through fires and heat. Avoid these dangers by reading and following the directions given in the chapter **Safety instructions**. If you have had training in soldering you can skip this chapter.

- Use a small soldering iron with max. 30 Watt. Keep the soldering tip clean so the heat of the soldering iron is applied to the solder point effectively.
- Only use electronic tin solder with a flux.
- When soldering electronic circuits never use soldering-water or soldering grease. They contain acids that can corrode components and copper tracks.
- Solder quickly: holding the iron on the joints longer than necessary can destroy components and can damage copper tracks or soldering eyes.
- Observe correct polarity orientation of semi-conductors, LEDs electrolytic capacitors and integrated circuits before soldering and ensure that the solder time does not exceed 5 seconds, otherwise components can be damaged.
- Apply the soldering tip to the soldering spot in such a way that the part and the soldering eye are heated at the same time. Simultaneously add solder (not too much). As soon as the solder becomes liquid take it away. Hold the soldering tip at the spot for a few seconds so that the solder flows into the joint, then remove the soldering iron.
- Do not move the component for about 5 seconds after soldering.
- To make a good soldering joint you must use a clean and unoxidised soldering tip. Clean the soldering tip with a damp piece of cloth, a damp sponge or a piece of silicon cloth.
- Cut the wires after soldering directly above the PCB solder side with a side cutter.
- After placing the parts, please double check for correct polarity. Check the PCB tracks for solder bridges and short circuits created by accident. This would cause faulty operation or, in the worst case, damage. You can remove excess solder by putting a clean soldering tip on the spot. The solder will become liquid again and flow from the soldering spot to the soldering tip.

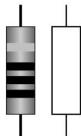
## Assembling the kit

You can skip this part if you have purchased a ready-built module.

### Preparation

Put the sorted components in front of you on your workbench. The separate electronic components have the following special features you should take into account to prevent mistakes in assembling:

#### Resistors



Resistors reduce current. Their mounting orientation is of no importance. The value of resistors for smaller power ratings (under 5 W) is indicated through colour rings. Every colour stands for another figure. The colour ring in brackets indicates the tolerance of the resistor which here is of no importance.

Value	Colour rings
1 k $\Omega$	brown - black - red (gold)
3,3 k $\Omega$	orange - orange - red (gold)

#### Trimm-potentiometers

Trimm-potentiometers (abrv. „trimm-pots“) are resistors which allow the value of resistance to be varied and that way to be adapted to the particular demands. In the middle they have a small slot into which a small screwdriver can be put in order to vary the value of resistance. The value is printed on the housing.

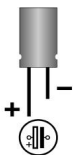
#### Capacitors



Among other things capacitors are used for filtering interference voltages or as frequency determining parts. Ceramic capacitors are not polarized, for that reason their mounting orientation is of no importance. Normally they are marked with a three-digit number which indicates the value coded.

Value	Number
100 nF	104

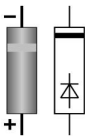
## Electrolytic capacitors



Electrolytic capacitors are often used to store energy. In contrast to ceramic capacitors they are polarized. One of the two leads is marked with a minus sign which indicates the mounting orientation. The value is given on the casing.

Electrolytic capacitors are available with different voltage sustaining capabilities. Using an electrolytic capacitor with a voltage sustaining capability higher than required is always possible.

## Diodes



Diodes allow the current to pass through in one direction only (forward direction), simultaneously the voltage is reduced by 0,3 to 0,8 V. Exceeding of the limit voltage always will destroy the diode, and allow current to flow in the reverse direction.

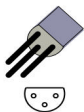
The diode type is printed on the body.

Diodes must be mounted in a given direction. The negative end is marked with a ring. This is shown in the PCB layout.

## Zener diodes

Zener diodes are used for limiting voltages. In contrast to „normal“ diodes they are not destroyed when the limit voltage is exceeded.

## Transistors



Transistors are current amplifiers which convert low signals into stronger ones. They have three contacts. As they are polarized, they have to be mounted in a certain direction.

BC-Types have a housing in form of a half cylinder (SOT-housing). The cross section is shown in the PCB Layout which determines the mounting orientation.

## Terminal strips

Terminal strips are solder-in screw-type terminals. They provide a solder-free and safe connection of the cables to the circuit, which can still be separated any time. When several terminal strips have to be mounted side by side, they have to be put together before mounting.

## Assembling the kit

Start the assembly with the resistors and the diodes. First solder the components on the solder side of the PCB and then cut the excess wires with the side cutter, as short as possible. Continue the assembly with the transistors, the trimm-pot and the capacitors. Finally solder the terminal strips. Join them together before soldering.



### Caution:

Diodes, transistors, trim-pots and electrolytic capacitors must be placed in the right direction! If you solder them the wrong way the affected parts can be damaged when you connect the power. In the worst case the whole circuit can be damaged. In any case, a wrongly connected part will not function.

## Performing a visual check

Due to material defects and/or improper assembly there may be risks of injury. Transport damage to ready-built modules is also possible. So you must perform a visual check after the assembly or after unpacking the module.



### Caution:

Do not power up the module yet.

Check all nuts, pins and connections as well as the mechanical connections for correct assembly.

The following points are inapplicable if you have purchased a ready-built module.

- Remove all loose parts, wire ends or drops of solder from the PCB. Remove all sharp wire ends.

- Check that solder contacts which are close to each other are not unintentionally connected to each other. Risk of short circuit!
- Check that all components are polarised correctly.

When you have remedied all faults, go on to the next part.

## Performing a functional test

Even if you have purchased a ready-built module, check all functions. Transport damage can never be excluded. Use a lamp for testing the module.

First turn the trim-pot R8 to the left position. Thus the shortest possible switching time is set.

Follow the connections diagram fig. 2. Connect the test lamp to the terminal strips 1 and 2 and the power supply to the terminal strips 3 and 4. When connecting the module to alternating voltage the polarity of the connection is irrelevant, when connecting it to direct voltage you have to observe the polarity.

Switch on the power supply. Temporarily bridge the terminal strips 5 and 6 ( e.g. via a switch). The lamp now lights for approx. one second and goes out again.



### Caution:

If a component gets too hot or starts to smoke, disconnect the mini-timer and power supply from the mains **immediately**. Possible short circuit! Check the assembly!

## Connecting the mini-timer

After a successful functional test disconnect the mini-timer from the power supply and the test lamp from the module. Connect the desired accessory and mount the module. Proceed analogous to the functional test. In order to trigger the circuit it is possible to use e.g. a switch or a reed contact.



### Caution:

If the accessory is polarized (e.g. an LED or an electronic module) you have to observe the polarity. The accessory might be damaged otherwise.



### Caution:

The power consumption of the connected load should not exceed 100 mA, otherwise the module will be damaged. It is possible to switch accessories with higher power consumption via a relay.

## Setting the switching time

The desired switching time is set at the trim-pot R8. Depending on the setting it is between 1 and 100 seconds ( $\pm 20\%$ ). Depending on the place for installation it may be useful to set the switching time with the test lamp.

**Tip:** If the maximum switching time to be set does not match your wishes you may replace the capacitor C3. Example: With a capacitor 470  $\mu$ F the maximum switching time will be approximately doubled.

## Connection of a relay

In order to switch an accessory with more than 100 mA current consumption or in order to switch between two accessories you have to switch the accessory via a relays.

## FAQ

- Parts are getting too hot and/or start to smoke.



**Disconnect the system from the mains immediately!**

Possible cause: one or more components are soldered incorrectly.

→ Perform a visual check.

- The lamp connected for testing the module does not light.

Possible cause: The diode D2 is mounted the wrong way around.

→ Change the mounting orientation.

Possible cause: The lamp is defective. → Check the lamp.

If you cannot find the problem, please return the module for repair (address on the cover page).

## Manufacturer's note

According to DIN VDE 0869, the person who builds this kit or brings the circuit into operation is the manufacturer of the product. If he sells the product to another person he is responsible for passing on all the relevant papers. Domestic appliances assembled from a kit are deemed industrial products and must comply with health and safety regulations.

## Certification

This product conforms with the EC- directive 89/336/EWG on electromagnetic radiation and is therefore CE certified.

## Conditions of warranty

This product is guaranteed for two years. The warranty includes the correction of faults which can be proved to be due to material failure or factory flaw. As we have no control over the correct and proper assembly and mounting we can only guarantee the quality of the components and the completeness of kits. We guarantee the function of the parts according to the parameters in not mounted state as well

as the adherence to the technical specifications of the circuit when assembled and connected according to the manual.

Other claims are excluded. By law, we are not responsible for damages or secondary damages in connection with this product. We retain the right to repair, make improvements, supply spare parts or return the purchase price.

The following invalidate the warranty:

- using an unsuitable soldering iron, solder containing liquid acids or similar,
- if the kit is assembled and soldered poorly, or if damage is caused by not following the instructions in this manual,
- if the ready-built module has been altered and repair attempts have failed,
- if arbitrary changes in the circuit are made,
- if the circuitry is changed in any way, through adding or omitting wiring or components, or through modifying the circuit board,
- if parts other than the original ones delivered with this kit are used,
- if the copper tracks or soldering eyes are damaged,
- when components are mounted incorrectly, or if the components or the circuit are poled incorrectly, also subsequent damage resulting from these faults,
- if damage occurs due to an overload of the module,
- if connected to a incorrect voltage or current,
- if damaged by other persons,
- if damaged by faulty operation or if damaged by careless use or abuse,
- if damaged by touching components before electrostatic discharging of the hands.

## Stückliste - Parts list

### Nomenclature – Stuklijst

Widerstände - Resistors	R1, R2, R3, R4	3,3 k $\Omega$
Résistances - Weerstanden	R5, R6, R7	1 k $\Omega$
Trimpotis - Trim pots	R8	470 k $\Omega$
Potentiomètres - Trimpotmeter		
Kondensatoren - Condensers	C1, C2, C3	220 $\mu$ F, 25 V
Condensateurs - Condensatoren	C4	100 nF
Zener-Dioden - Zener diodes	D1	5V1 *
Diodes Zener - Zenerdiodes		
Dioden - Diodes	D2, D3	1N4004 *
Transistoren – Transistors	Q1, Q2, Q3	BC547B *
Anreihklemmen - Terminal strips	X1 bis X6	2 x 3-pol.
Borniers - Aansluitklemmen		

\* oder ähnlich - or similar - ou équivalent - of gelijkwaardig

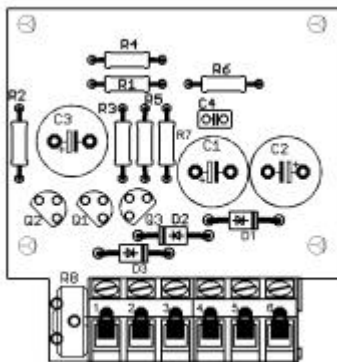
## Bestückungsplan

### PCB layout

### Plan d'implantation

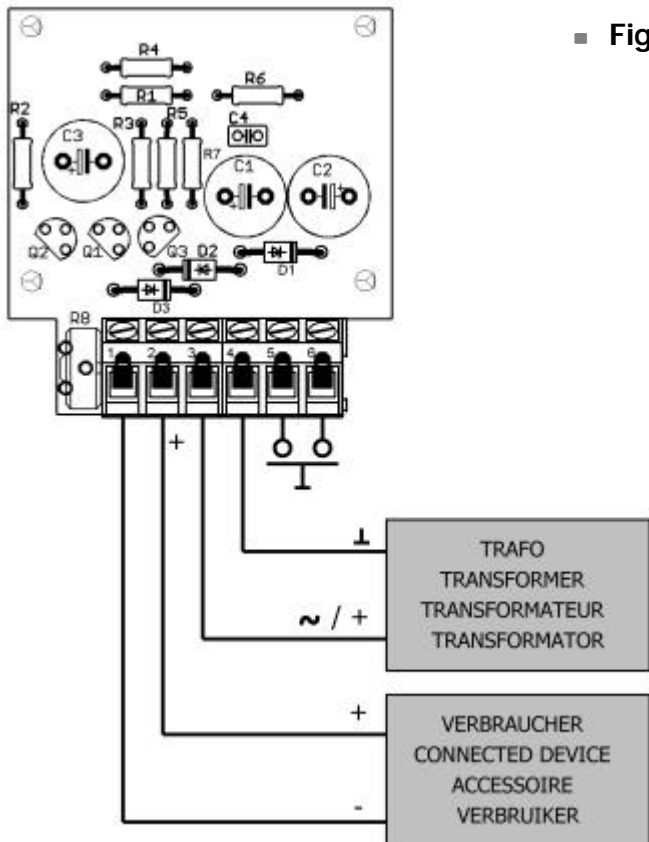
### Printplan

■ Fig. 1



# Anschlußplan – Connections

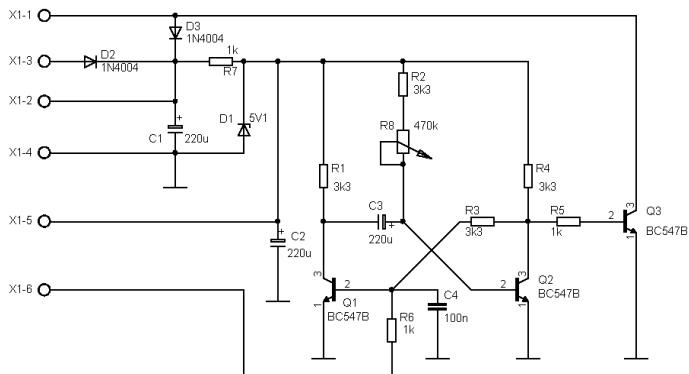
## Schéma de branchement - Aansluit plan



# Schaltplan - Circuit diagram

## Schéma de principe - Schakelschema

■ Fig. 3



Aktuelle Informationen und Tipps:

Information and tips:

Informations et conseils:

Actuele informatie en tips:

**<http://www.tams-online.de>**

Garantie und Service:

Warranty and service:

Garantie et service:

Garantie en service:

## **Tams Elektronik GmbH**

Rupsteinstraße 10

D-30625 Hannover

fon: +49 (0)511 / 55 60 60

fax: +49 (0)511 / 55 61 61

e-mail: [modellbahn@tams-online.de](mailto:modellbahn@tams-online.de)